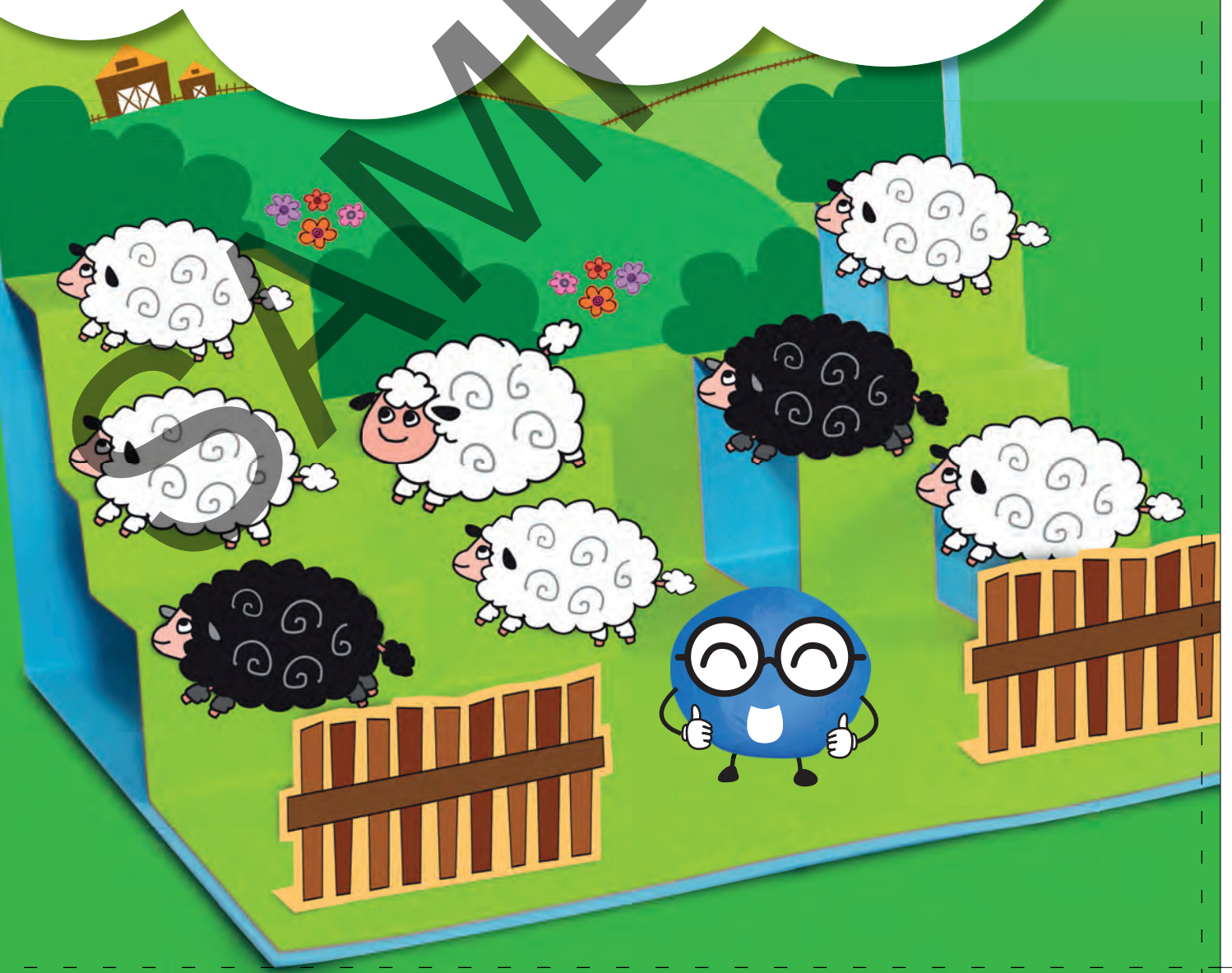
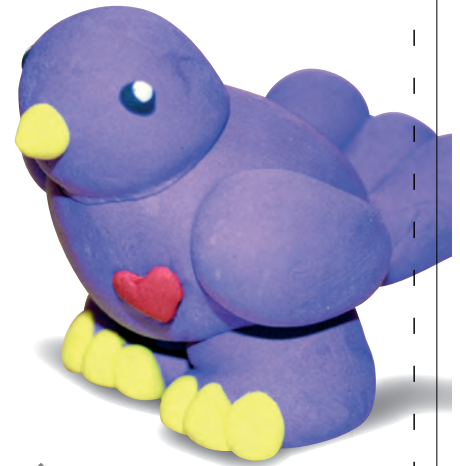


Communicate your ideas  
through art with us, ARTIE,  
SMARTIE and DOTTIE!

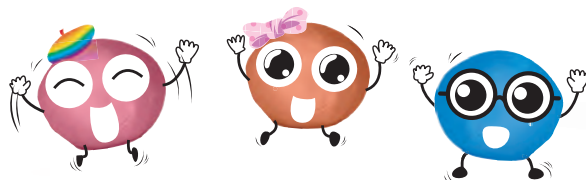
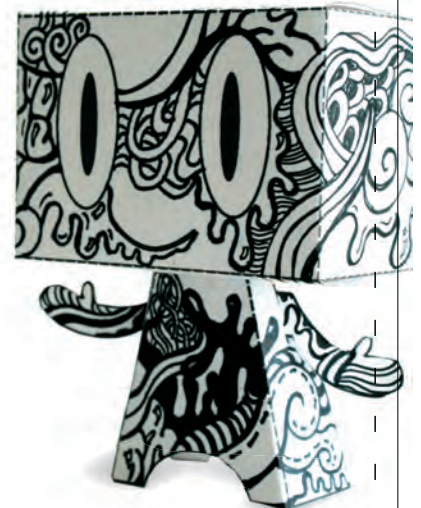




# Contents



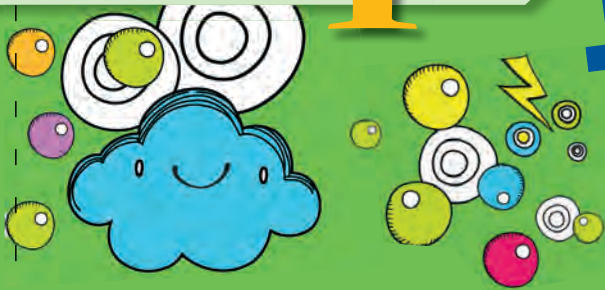
|                                     |    |
|-------------------------------------|----|
| Preface and Features                | iv |
| Start with Art!                     | vi |
| Unit 1 Doodle-doo!                  | 2  |
| Unit 2 i-Symbol                     | 9  |
| Unit 3 Mural, Mural on the Wall     | 13 |
| Unit 4 Separate My Tones            | 17 |
| Unit 5 Shape Up!                    | 21 |
| Unit 6 Dab It!                      | 26 |
| Unit 7 Printed Landscapes           | 31 |
| Unit 8 Rhythmic Art                 | 36 |
| Unit 9 Drawing with Scissors        | 42 |
| Unit 10 Roly-poly Sculptures!       | 47 |
| Unit 11 Cartoon Characters          | 51 |
| Unit 12 Deco-Textures               | 56 |
| Unit 13 Fantastic Dreams            | 61 |
| Unit 14 Shaping Space               | 67 |
| Unit 15 Mirror, Mirror on the Floor | 71 |
| Unit 16 Colour Mixology             | 75 |
| Unit 17 Comic Connection            | 80 |
| Unit 18 Singapore Art Challenge!    | 85 |
| Glossary                            | 94 |



Unit

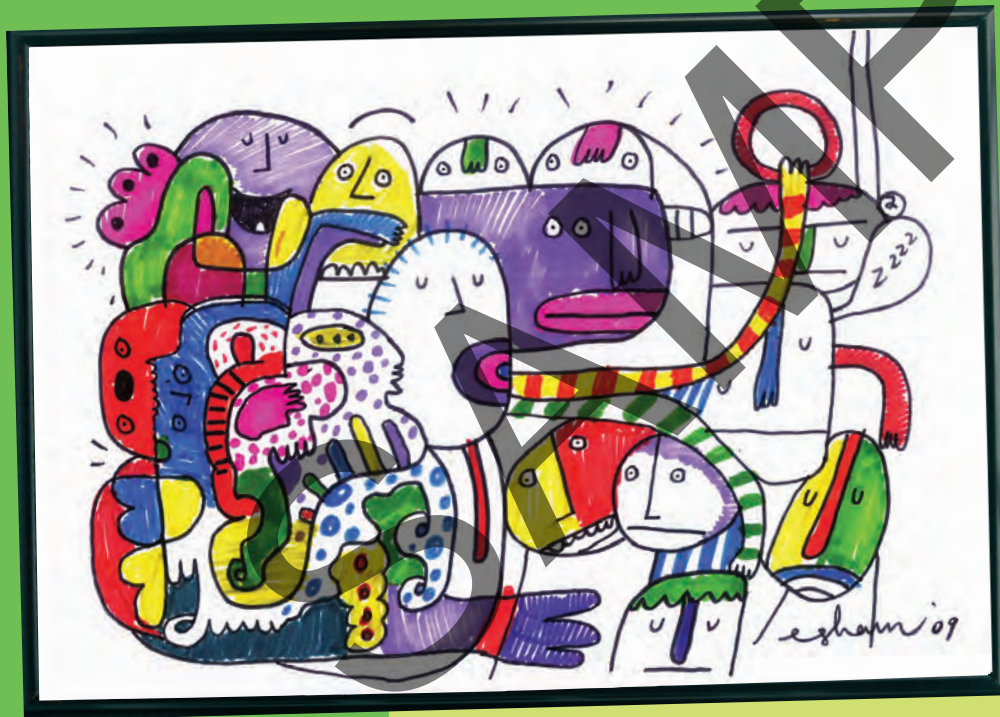
1

# Doodle- doo!



**Doodles** are spontaneous drawings. When we doodle, we draw dots, lines, shapes and patterns that come to our mind. Usually, we do not know what the final artwork will look like.

Here are two doodles. One is by Soh Ee Shaun, a Singapore artist. The other is by a group of primary school pupils.



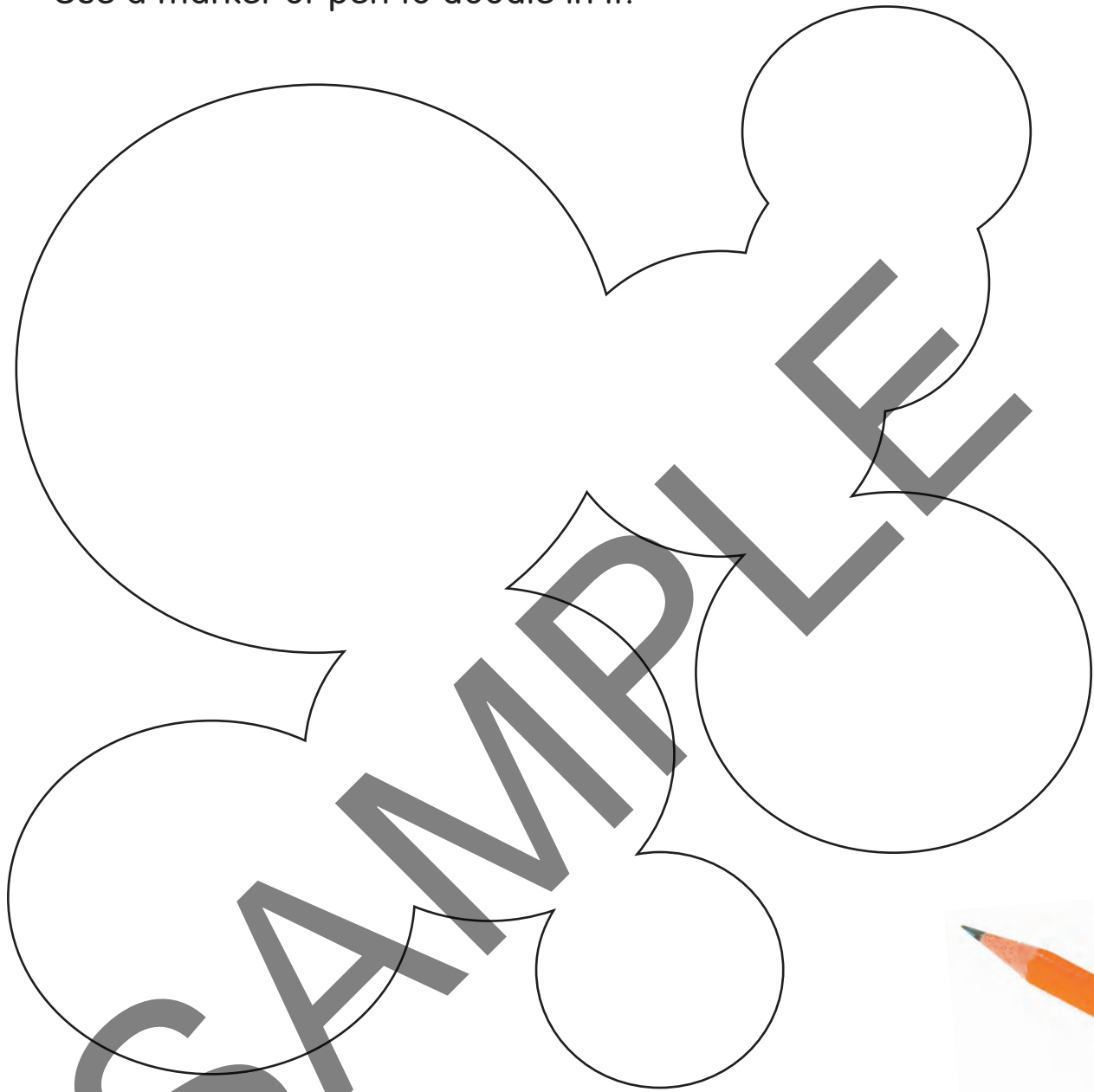
Soh Ee Shaun. *Random Sketch*, 2009. Ink and markers on paper.

## Think Like an Artist

What do you think Soh's artwork is about? Compare it with the artwork on the right. How are they similar or different?



Now, try doodling! Look at the funny-looking shape below.  
Use a marker or pen to doodle in it!



*Talk About Art*



Share with your classmates what you have doodled. What kinds of lines and shapes did you use? Can your classmates tell what your doodle is about?

Be creative when you doodle. Don't worry about making mistakes. Make the mistakes part of your doodle!



What can we do with our doodles? Here are two examples of what Singapore artist, Soh, and British artist, Jon Burgerman did with theirs!



Soh created these party-themed toys and covered it with his doodles in 2006.



Soh Ee Shaun. *Boogie Wonderland Trexi 10" customisation for Gokitsch, 2006.* Ink and markers on plastic vinyl.

In 2009, Burgerman doodled on these Mini Munny toys for a charity project in Cambodia. The toys were sold at an auction. The money raised was used to help poor children in Cambodia.



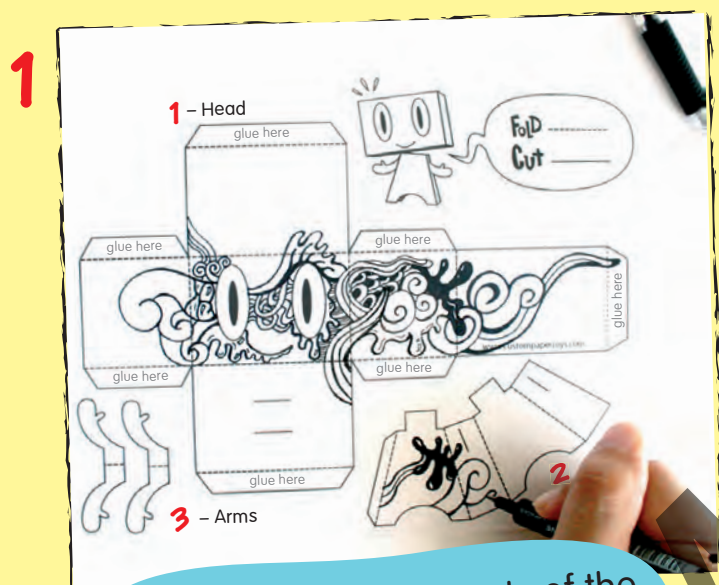
Jon Burgerman. Rare customised *Mini Munny*, 2009. Munny is a ® and © of Kidrobot, Inc.

## A Doodle Toy

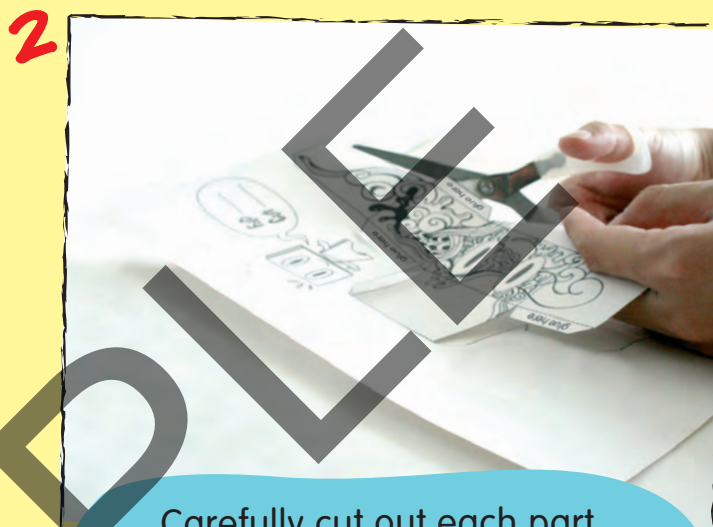
Make a toy covered with your doodles! Doodle on the template provided on page 7. Then, cut it out and assemble it to make a toy!

### Things You Need

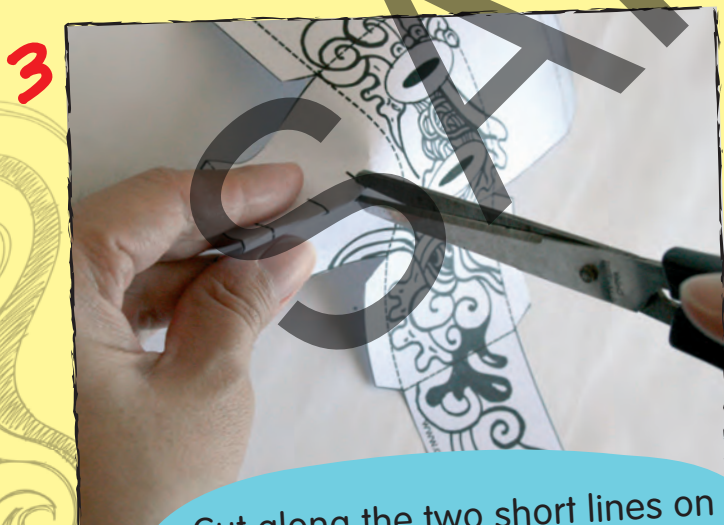
- Template on page 7
- Coloured markers
- Scissors
- Glue



Doodle on all three parts of the template found on page 7.



Carefully cut out each part of the template along the continuous black outlines. Do not cut along the dotted lines.



Cut along the two short lines on the 'head' template to create slits. Do the same for the 'body' template.

### ART Tip!

To cut slits in the middle of a piece of paper, gently fold the paper, such that the short lines are also folded. Then, cut the lines across the folded edges.

4



Fold each part of the template along the dotted lines. Then, glue down the sides neatly.

5



Join the different parts of the toy by slotting them into the slits that you made earlier.

### Talk About Art

Show your toy to your classmates. Share with them what you were thinking about while you were doodling. Describe the kinds of lines and shapes you made in your doodles.



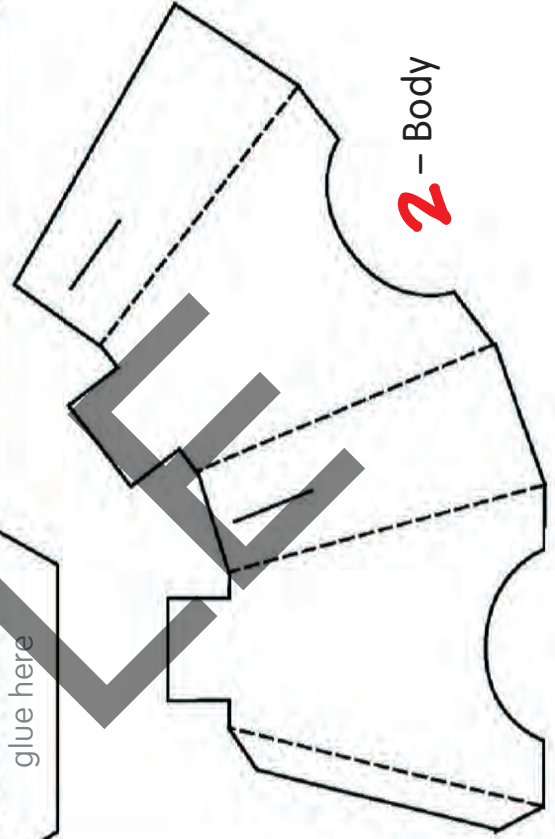
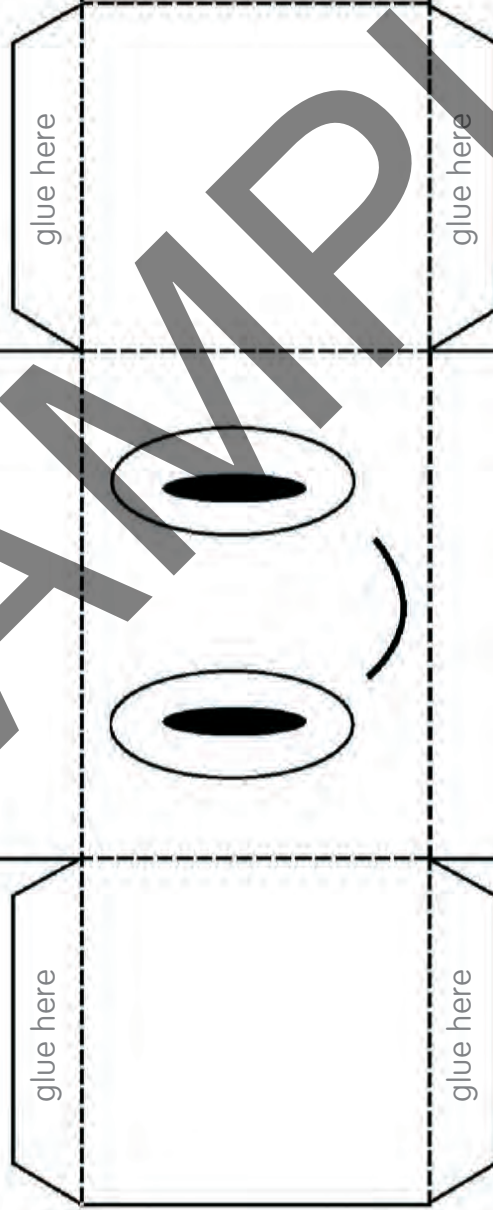
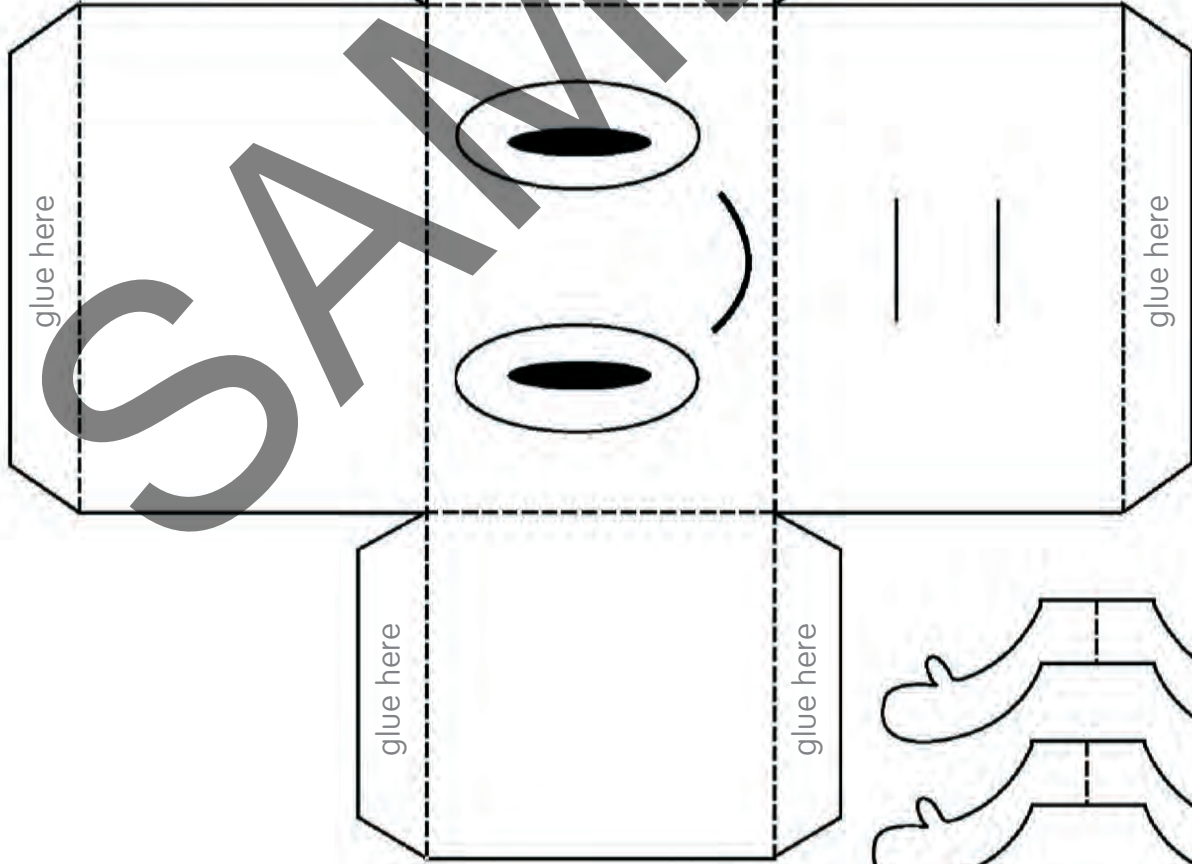
### Looking Back...

Discuss what you have learnt:

- What is a doodle?
- What can artists use doodles for?



**1** - Head



**3** - Arms

