

Share your understanding
of art and appreciation for
it with us, ARTIE, SMARTIE
and DOTTIE!



Contents

Preface and Features	iv
Start with Art!	vi
Unit 1 Flip It Over	2
Unit 2 Capturing My World	9
Unit 3 Raise Me Up	17
Unit 4 Colour Me Beautiful	23
Unit 5 Makeover!	30
Unit 6 Take a Closer Look	35
Unit 7 Study and Sketch	41
Unit 8 Wordplay	46
Unit 9 Attention Please!	51
Unit 10 Artistic Times	57
Unit 11 Pretty Packaging	63
Unit 12 Hidden Motifs	69
Unit 13 Patterns Around Us	76
Unit 14 Action Images	82
Unit 15 Our Art Festival	91
Glossary	96



Flip It Over



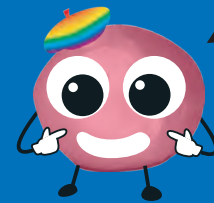
When creating artworks, some artists paint from what they see in photographs. They make their artworks look almost the same as the photographs. Such artworks are known as **photorealistic** artworks.

Look at the example below.

Chuck Close, *Bob*, 1970.
Acrylic on canvas.



American artist Chuck Close is well-known for creating artworks of gigantic close-ups of faces. He usually uses acrylic paint for his paintings.



Think Like an Artist

Close took a photograph of his friend Bob and used it to make this artwork.

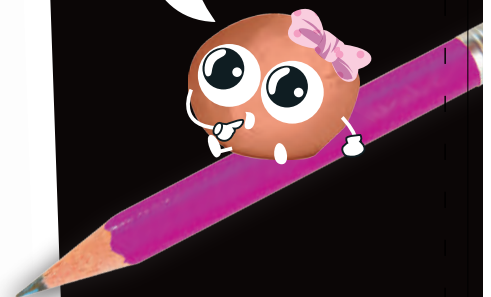
Why do you think Close used his friend's photograph instead of getting his friend to pose for him?

Photographs often show special moments in people's lives. Artists can choose to capture those moments through their artworks. They add a personal touch by copying photographs showing such moments in a style that they like.

Look at this photograph of two friends. Compare it with the artwork below.



What feeling does this artwork give, compared to the photograph?

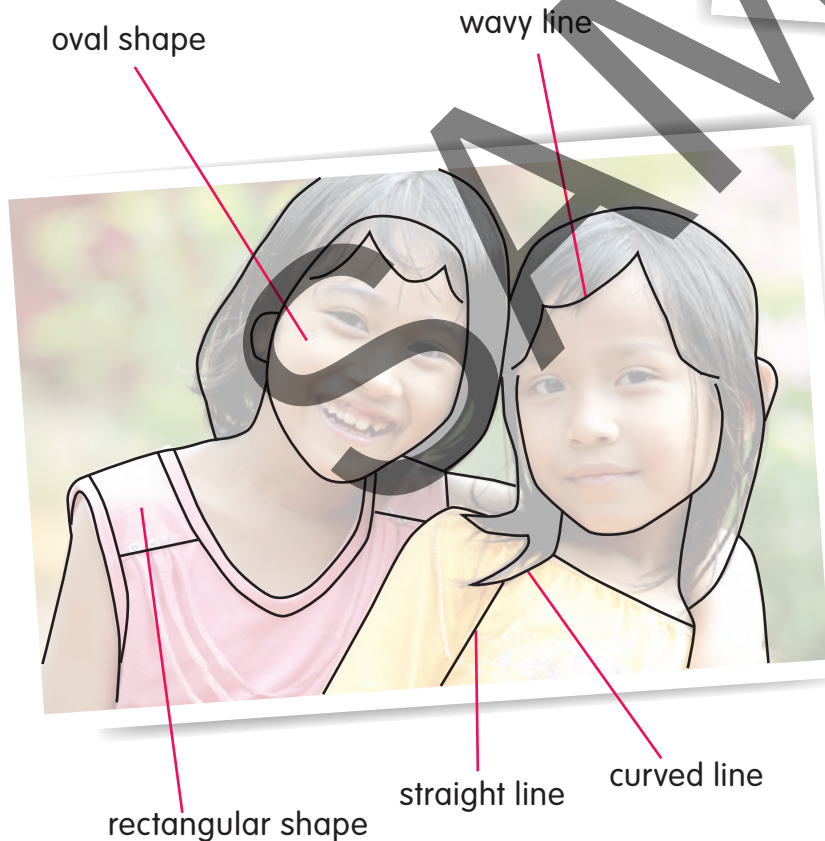
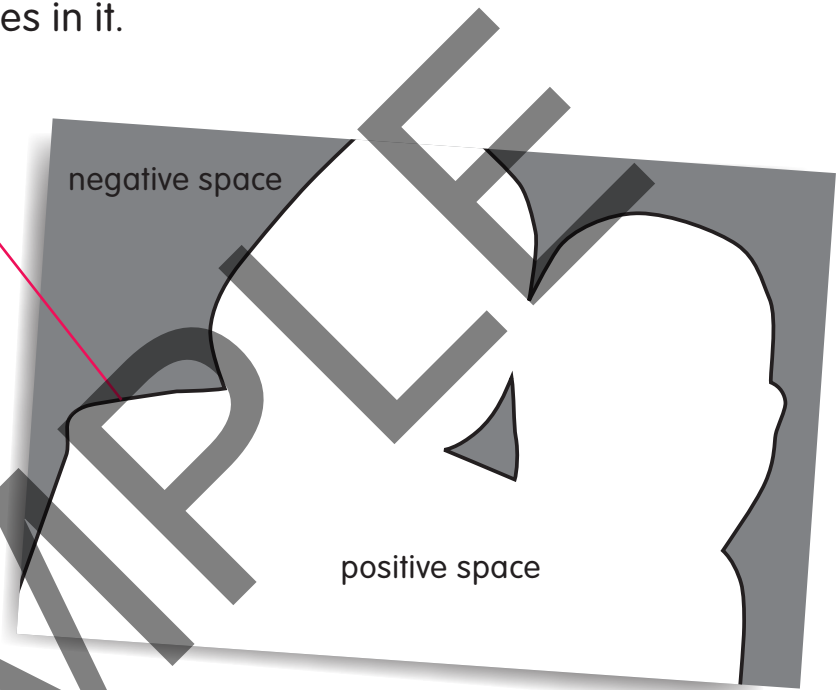


Lines and Shapes

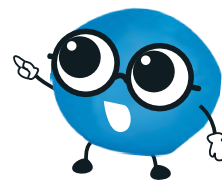
To draw a photorealistic artwork from a photograph, we need to first identify the different lines and shapes within the positive and negative spaces in the photograph.

Let's look at the photograph of the two friends on page 3 again and study the lines and shapes in it.

There is an invisible line around the two friends. This forms the outline of the positive space.



Within the positive space, there are different lines that form various shapes as shown on the left.



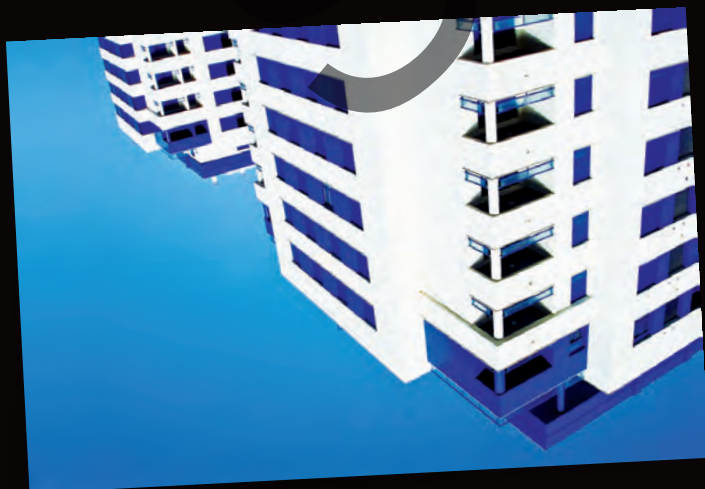
What other lines and shapes can you find in the photograph?

It can be difficult to draw the individual lines and shapes in a photograph because we tend to see the objects in the photograph as separate objects. We often do not notice the lines and shapes that make up these objects.

By studying the photograph upside down, we force our brains to 'see' the objects as lines and shapes.

Now study the upside-down photographs below and do the following in the spaces provided:

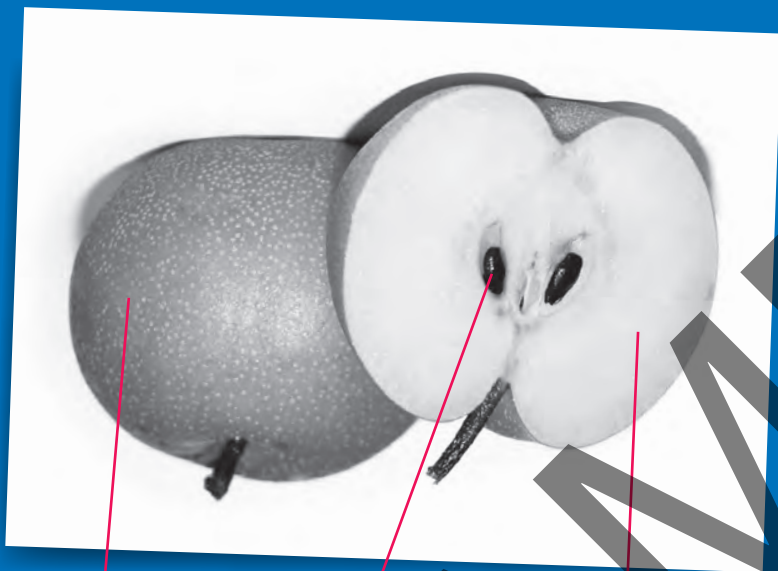
- Draw an outline of the positive space.
- Shade the negative space.
- Draw the lines and shapes that you see within the positive space.



Tones

Once we have identified the lines and shapes and created our drawing, we can use shading to make our drawing look more realistic. **Shading** allows us to show the different tones of the objects in our drawing. This makes the objects look more three-dimensional (3-D).

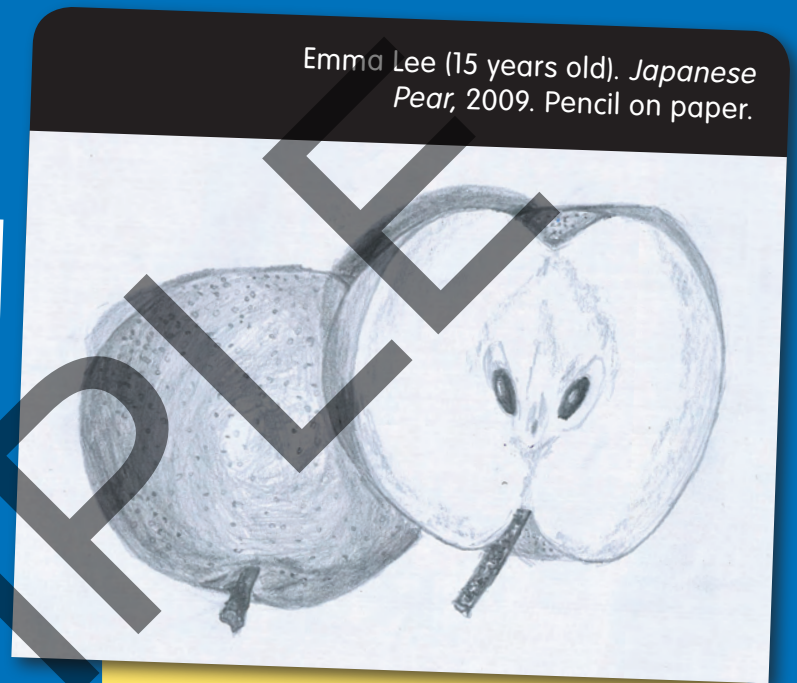
Look at the photograph below and the artwork on the right.



middle tone

darkest tone

lightest tone



Think Like an Artist

Does the drawing show the different tones of the objects? Which parts show darker tones? Which parts show lighter tones?

A simple way to shade an area is to move the point of our pencil back and forth evenly across the area until we get the tone that we want. Practise shading in the space provided on the right.



Upside-down Portrait

Now, make a photorealistic drawing of a family member, a friend or someone you admire. Use the upside-down drawing method that you have learnt earlier.

Things You Need

- A4-sized black-and-white photograph
- Drawing paper
- Pencil and eraser

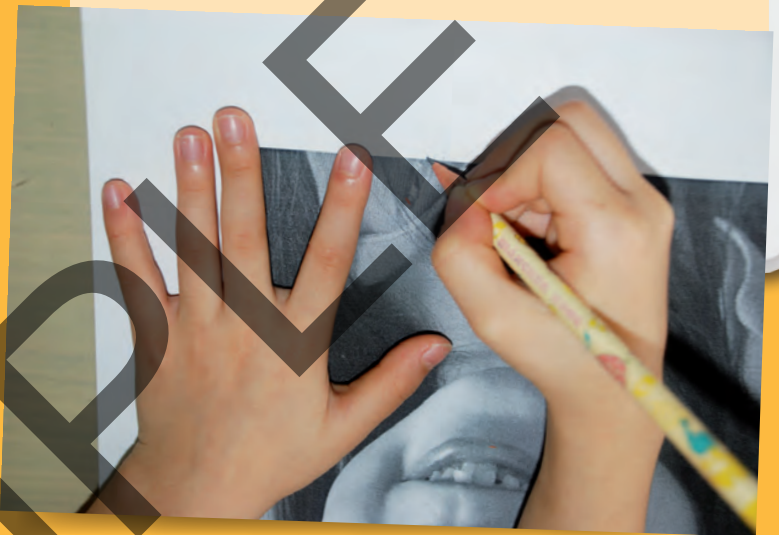
1

Turn the photograph upside down. Spend a few minutes studying the different lines and shapes, and how they are positioned in the photograph.



2

Trace the edge of the photograph with your pencil on a piece of drawing paper.



4

Next, draw the different lines and shapes that are within the positive space.



3

Start drawing the portrait of the person. Draw the outline of the positive space first.

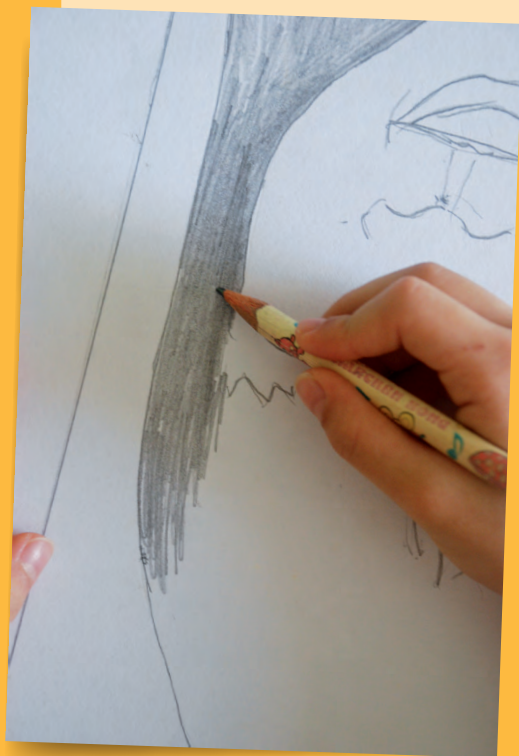


What do you see when you look at the upside-down photograph ?

What lines and shapes do you see in the photograph ?

5

Complete your artwork by shading it. Remember to do this step upside down too!



6

Turn your drawing right side up and compare it with your photograph.



Does your drawing look similar to your photograph?

Discuss with your classmates the difficulties you faced when drawing while looking at an upside-down photograph.



What if?



What effect(s) would you get if you use a black marker or crayon instead of a pencil to draw a photorealistic picture?



Let's Reflect...

- Why do you think artists make artworks based on photographs?
- What do artists look out for when using photographs to make their artworks?
- How can a drawing be made to look more realistic?

